

FIS

LIVE

Setup Manual

v.3.2

The FIS LIVE app does not constitute a formal research recommendation or an offer to buy or sell, either expressly or otherwise. It does not offer investment advice and does not consider the investment objectives and policies, financial position, or portfolio composition of any user. Trading swaps and over-the-counter derivatives, exchange-traded derivatives, and options involve substantial risk and are not suitable for all investors. The information in the FIS LIVE APP has been prepared based on economic data, trading patterns, actual market news, and events, and is only valid on the date of publication. The information should not be relied upon as authoritative or taken in substitution for the exercise of your own commercial judgment. Freight Investor does not make any guarantee, representation or warranty, (either expressly or impliedly), as to the factual accuracy, completeness, or sufficiency of the information contained herein. Freight Investor does not accept any liability for any loss or damage, howsoever caused, arising from any errors, omissions, or reliance on any information or views contained in the FIS LIVE APP. No part of this material may be copied or duplicated in any form by any means or redistributed without the prior written consent of Freight Investor. You are advised to perform an independent investigation of any transaction to determine whether any transaction is suitable for you. Freight Investor Services Limited (UK) is authorised and regulated by the Financial Conduct Authority (FRN 211452)

We are happy to let you know
your account is now active

The following slides will give you
the information you need to start
using the App and to explore its
features and functionality.

**Thank you for
registering
with FIS LIVE**

Contents

1. Setting up your App – iPhone
2. Setting up your App – Android
3. Applications Features
4. Multiple Markets
5. My View
6. My View - Customisation
7. Pricing Status
8. Price Movements
9. Carbon Emissions
10. Partner Content
11. News Ticker and Service Status Bar
12. Customising your Favourites
13. Viewing Historical Pricing and Charts
14. Live Pricing on Charts
15. Setting up Price Alerts
16. Reports Filter
17. Using FIS Live on your Desktop

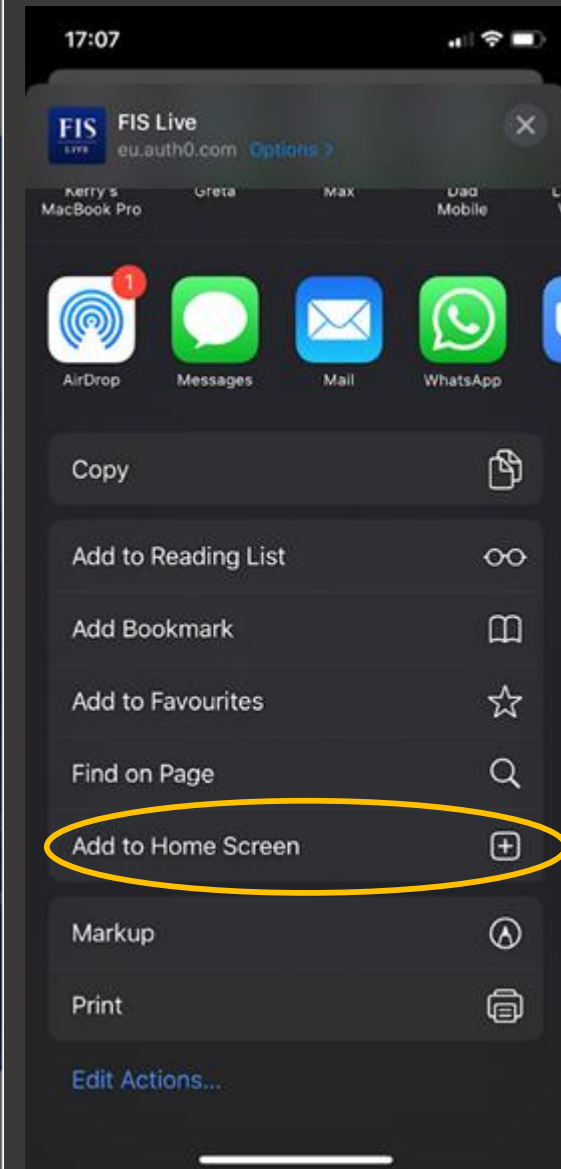
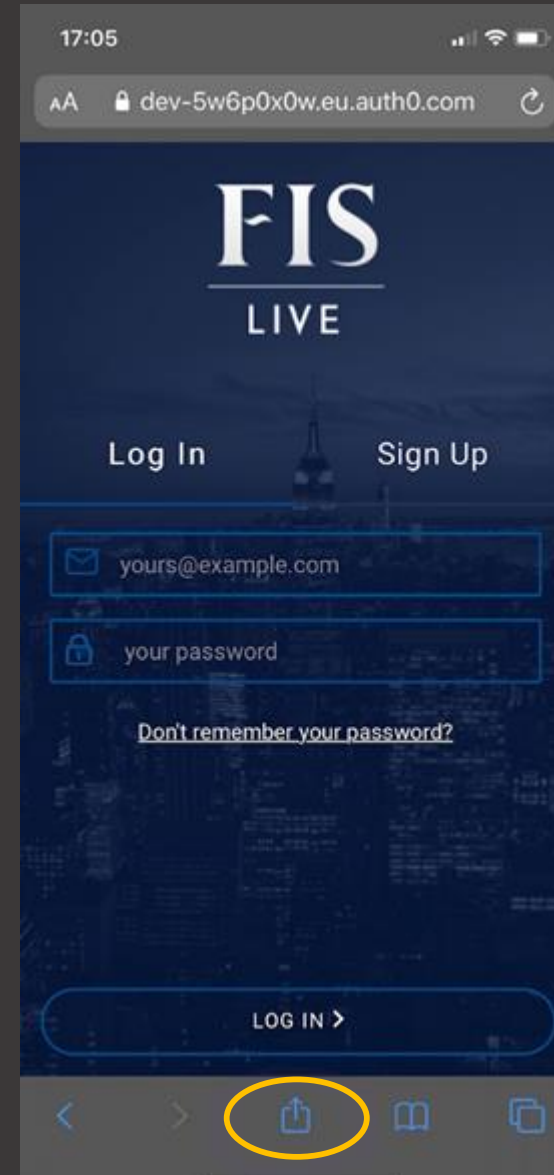
Setting up your App

For iPhone Users

To get the full app on your phone – go to www.fis-live.com in Safari, then click the export box icon at the bottom of the screen.

When the menu appears, select 'Add to Home Screen'.

This will put an icon on your screen and give you the full-screen version of the app.



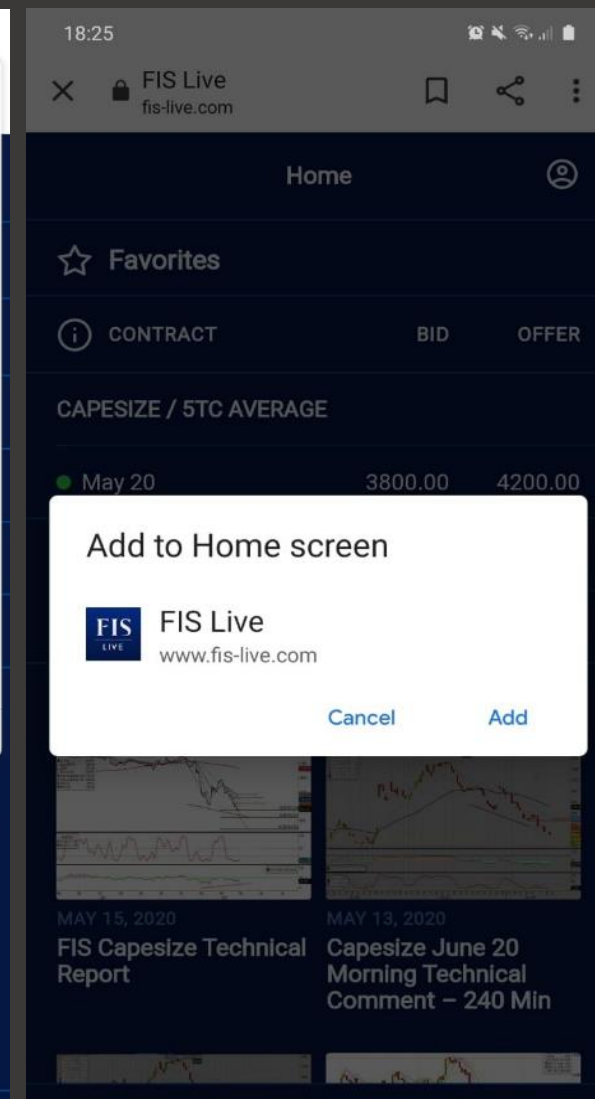
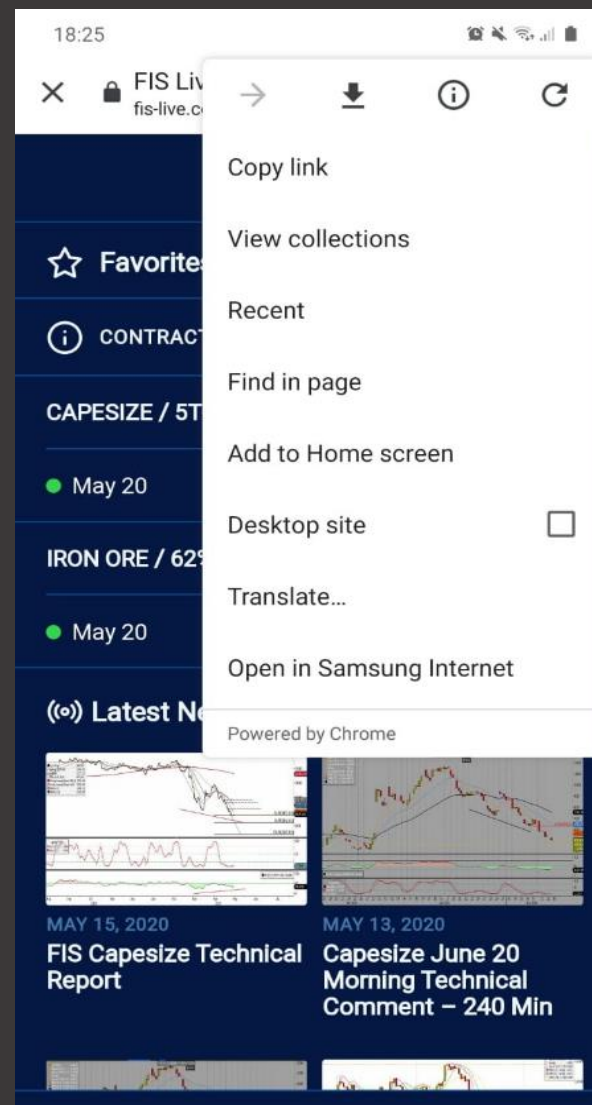
Setting up your App

For Android Users

Go to www.fis-live.com in Chrome and an option to add to your home screen should pop up.

If not, bring down your menu from the top right-hand corner.

Select 'Add to Home Screen'.

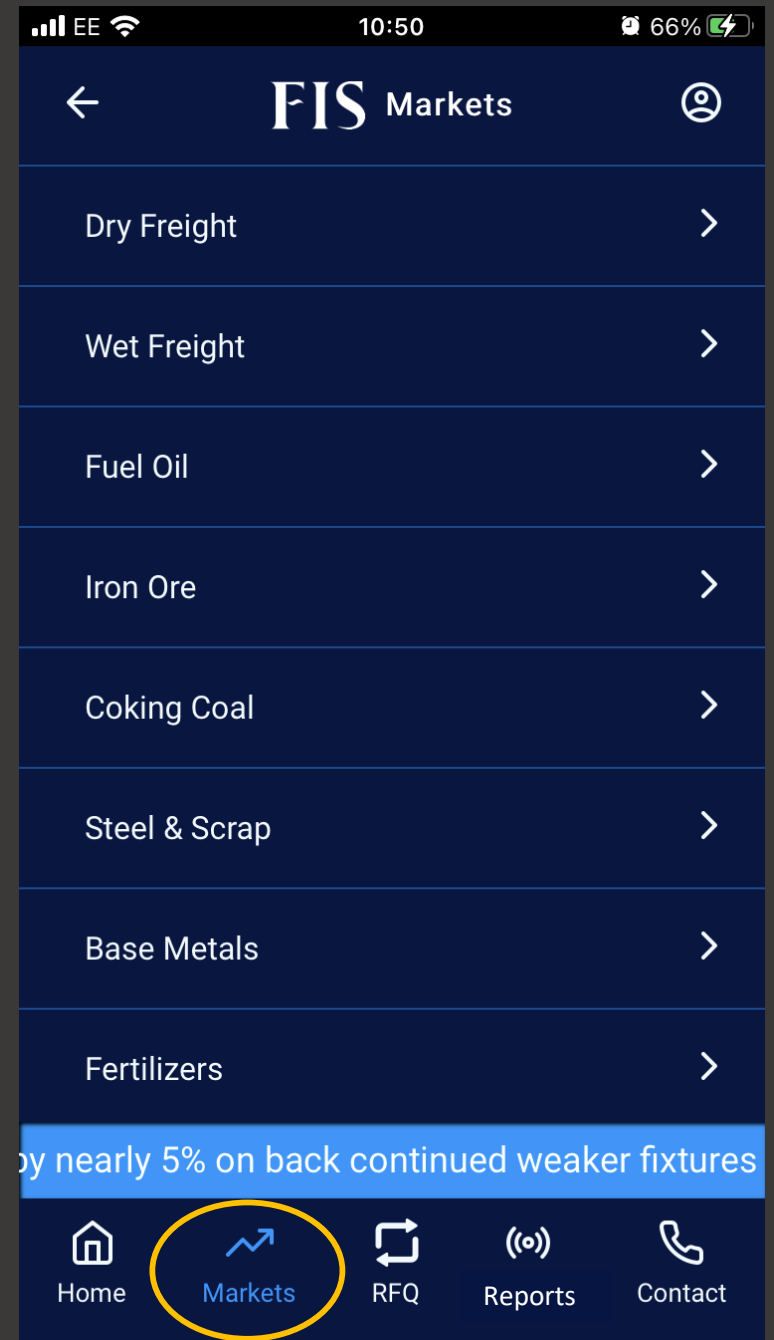


Application Features

Multiple Markets

FIS Live boasts a range of commodity markets right across the freight and bulk commodity spectrum.

You can view all of these by clicking on the 'Markets' tab, which will take you through to a full list of all products currently being priced on the FIS Live App.



My View - Cross Product Display

My view allows you to pick pre-set or a custom selection of our markets giving you a side by side view of your markets on your home screen.

Click 'EDIT – MY VIEW' to customise your Home page screen with the markets you want to see, such as Fuel Oil.

☆ My View
Price Movement From Close
EDIT - MY VIEW

	Singapore 380			Rotterdam 3.5%			Singapore VLSFO 0.5%			Rotterdam VLSFO 0.5%			Singapore 10ppm GO%			ICE Gasoil Swap		
	Bid	Offer		Bid	Offer		Bid	Offer		Bid	Offer		Bid	Offer		Bid	Offer	
Jan 21	300.75	302.75	↑ 12.37	285.75	287.75	↓ 14.34	389.25	394.25	↓ 7.05	368.50	373.50	↓ 20.41	56.75	56.89	↑ 1.59	425.30	427.30	↑ 28.56
Feb 21	306.25	308.25	↑ 7.37	306.50	308.50	↑ 19.37	398.50	403.50	↑ 8.42	376.75	381.75	↓ 14.03	57.75	57.89	↓ 1.73	434.27	436.27	↑ 10.45
Mar 21	305.50	307.50	↓ 15.63	359.50	361.50	↓ 6.13	397.25	402.25	↓ 7.2	376.25	381.25	↓ 20.45	57.88	58.08	↑ 2.55	434.27	436.27	— 0
Q1 21	300.00	302.00	— 0	284.25	286.25	↑ 7.42	389.00	394.00	↑ 34.84	368.00	373.00	↓ 5.56	56.78	57.08	↓ 4.33	427.35	429.35	↑ 11.14
Q2 21	302.50	304.50	↓ 27.92	337.75	339.75	↑ 13.55	398.25	403.25	↓ 29.25	376.00	381.00	↓ 28.01	58.30	58.60	— 0	437.40	439.40	↓ 40.33
Q3 21	294.75	296.75	↓ 15.97	395.00	397.00	↓ 39.2	396.50	401.50	↓ 13.96	373.75	378.75	↑ 25.21	58.60	58.90	↑ 2.35	440.04	442.04	↓ 7.06
Cal 21	292.25	298.25	↑ 23.62	273.50	279.50	↑ 23.5	389.25	397.25	↓ 5.11	369.50	377.50	↑ 31.37	57.46	57.86	↑ 3.75	432.80	434.80	↑ 8.68

My View - Customising

To customise your My View, click the 'EDIT – MY VIEW' button, which will Open the Editor. Here you can click the drop down at the top left hand corner to select from pre-built cross product selections - 'Quick Lists', or select specific contracts from the 'Custom Selection'.

To add a new market drag a product name to an open slot and release, repeating until your selection is complete. Click confirm to post your selection onto your My View homepage screen. You can edit this page by repeating the process.

My View (Home Page Custom View) - Editor

		Bid	Offer	
Jan 21	368.50	373.50	↓ 20.41	Rotterdam 3.5%
Feb 21	376.75	381.75	↓ 14.03	
Mar 21	376.25	381.25	↓ 20.45	
Q1 21	368.00	373.00	↓ 5.56	
Q2 21	376.00	381.00	↓ 28.01	
Q3 21	373.75	378.75	↑ 25.21	ICE Gasoil Swap
Cal 21	369.50	377.50	↑ 31.37	

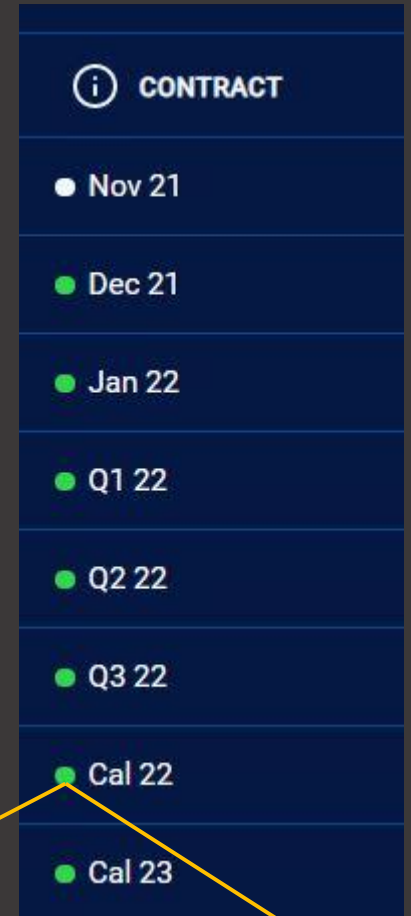
EXIT CONFIRM





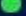
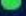
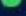

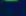
Pricing Status

FIS Live offers live pricings across our markets. However, there are times of the day when these prices are not live.

The status of the price being displayed is denoted by the coloured dot next to the contract period.

Green is a **Live Price** (updated within the last 30 minutes), White is Last (updated today but not in the last 30 minutes), and faded blue which is **Closing** (the close price from the previous day).



 CONTRACT
 Nov 21
 Dec 21
 Jan 22
 Q1 22
 Q2 22
 Q3 22
 Cal 22
 Cal 23

STATUS

The status color shows how old the current values are.


 Live  Last  Closing

Price Movements

You can track the price changes in markets by using the price movement column.

Here you have the option to display the price change from close or from last using the switch.

This will display the movement in price from yesterday's close price, or from the last posted price on the day.

 CONTRACT	BID	OFFER	<input checked="" type="checkbox"/> FROM CLOSE	CO2 EMISSIONS 
● Dec 20	12700.00	12900.00	↑ 550	 133.50
● Jan 21	14600.00	15000.00	↑ 1021	 133.50
● Feb 21	11500.00	11700.00	— 0	 133.50
● Q1 21	12450.00	12750.00	↓ 189	 400.50
● Q2 21	12850.00	13150.00	↓ 1248	 400.50
● Q3 21	17800.00	18150.00	↑ 1474	 400.50
● Cal 21	15100.00	15400.00	↓ 854	 1602.00
● Cal 22	14150.00	14400.00	↑ 970.7	 1602.00











Carbon Emissions

You can see estimates of the carbon footprint for the freight and commodity markets you are looking at within the right hand column.

The carbon estimates are calculated for one lot of the commodity.

Further information on the data can be located by clicking the 'i' in the top corner. When using a tablet or desktop the 'i' is replaced with the same information at the bottom of the screen.

*CO2 emissions are calculated in Metric Tonnes and reflect a total value of emissions per lot for the outlined period. Calculations are based on the [Baltic Exchange](#) standard ship definitions.

 CONTRACT	BID	OFFER	 FROM CLOSE	 CO2 EMISSIONS
● Dec 20	12700.00	12900.00	↑ 550	 133.50
● Jan 21	14600.00	15000.00	↑ 1021	 133.50
● Feb 21	11500.00	11700.00	— 0	 133.50
● Q1 21	12450.00	12750.00	↓ 189	 400.50
● Q2 21	12850.00	13150.00	↓ 1248	 400.50
● Q3 21	17800.00	18150.00	↑ 1474	 400.50
● Cal 21	15100.00	15400.00	↓ 854	 1602.00
● Cal 22	14150.00	14400.00	↑ 970.7	 1602.00

Partner Content

FIS has partnered with market leaders to provide expert content on our markets.

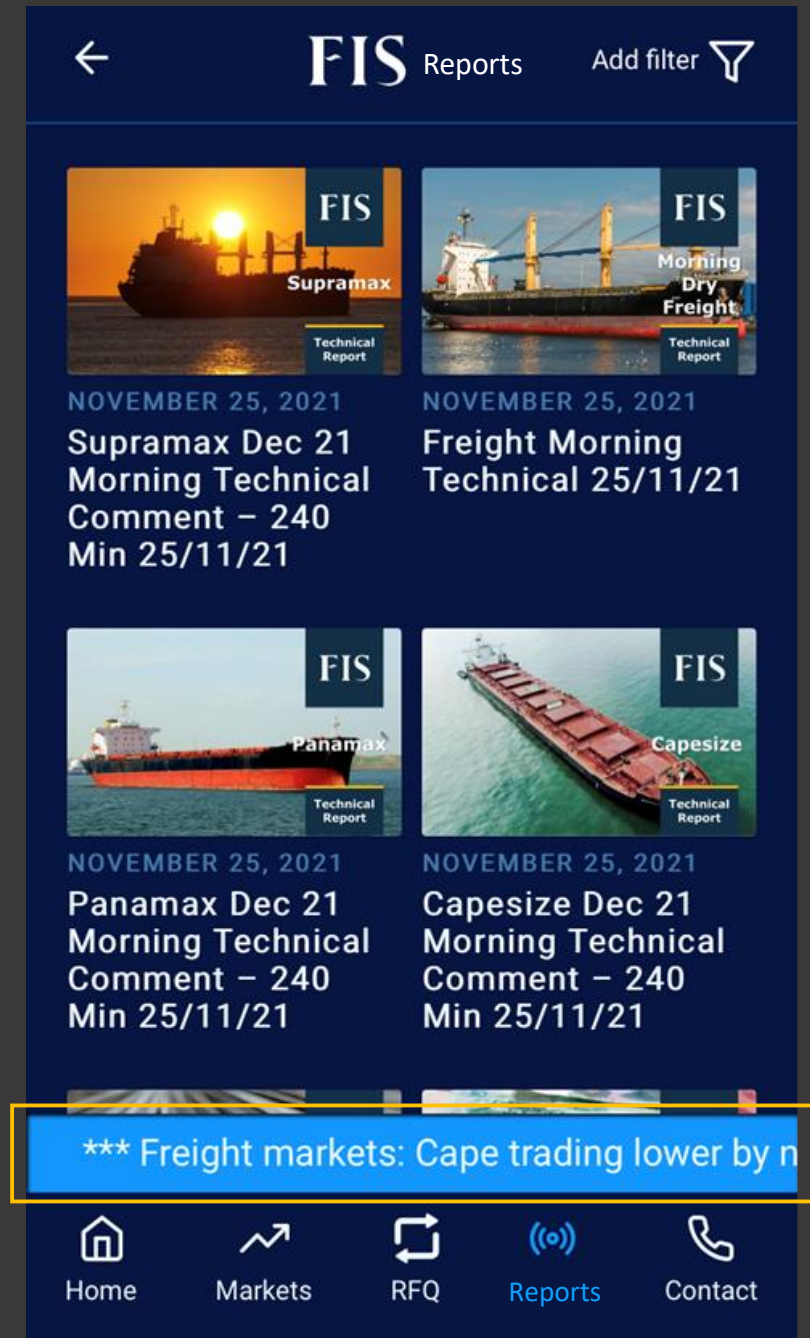
You can access this content via the 'Reports' tab.



News Ticker and Service Status Bar

Information about markets and important service information is displayed using the News Ticker (Blue) located at the bottom of the screen and the Service Status Information Bar (Orange) located at the top of the screen.

The news ticker will display any breaking news stories, or special commentary on our commodity markets.



Customising your Favourites

To add favourites, click the 'Add Favourite' button underneath the chart view of any individual contract. This will add it to your home screen.

News and analysis related to all your Favourites are shown below the contracts on the home screen.



Viewing Historical Pricing and Charts

To access the Historical Price data, navigate to the Live Pricing screen of your chosen commodity, click/tap on a given contract period.

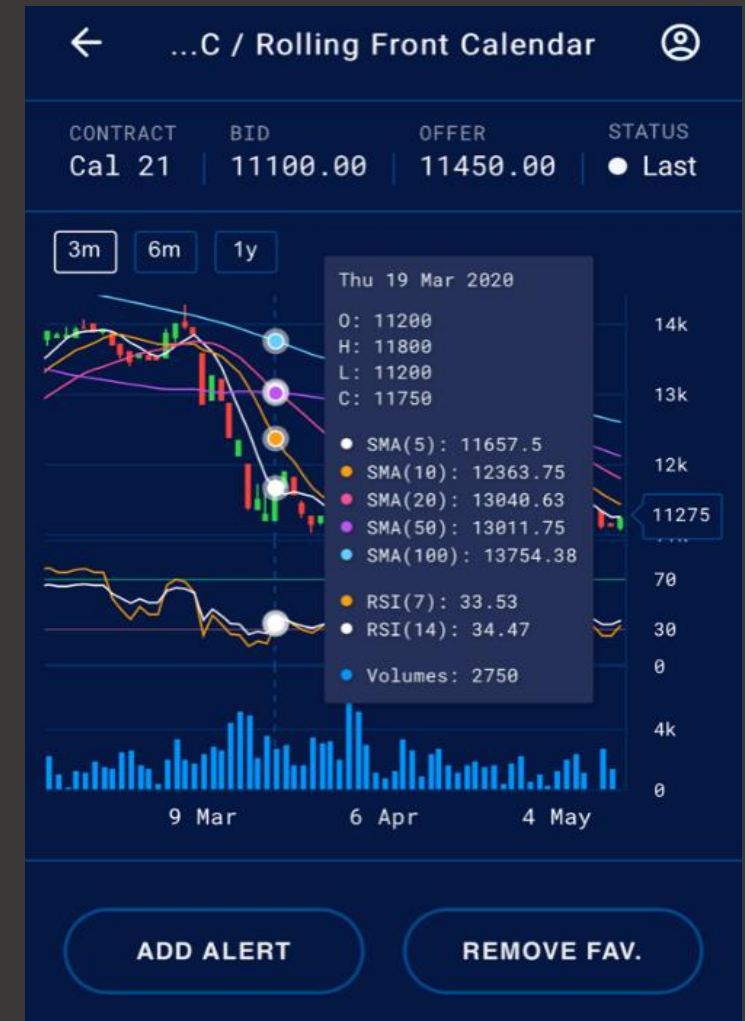
To view the technical data for a given day, move your mouse over the chart point, or tap and briefly hold the screen for mobile.

To cycle through the various pre-programmed technical indicators - Bollinger, SMA, EMA – click/tap the chart once more.

To view the RSI, MACD, KDJ technical, repeat the click/tap action but this time on the lower chart.

To increase or decrease the range of data select '3m', '6m' or '1y' from the options at the top left hand side of the chart.

Scroll sideways along the timeline by touching two fingers to the price chart and scrolling left or right.



Live Pricing on Charts

The candlestick charts give you the detail of live and historical market movements on a day by day basis.

Live intraday price movements can be viewed at the most current end of the chart, dynamically updating as prices from our brokers flow through into the app.




Setting Price Target Alerts

When looking at the chart view of any contract, select 'Add Alert'.

Select price level of the bid or offer at which you want to be alerted.

When the price reaches or exceeds the level you set, a text message confirming this will be sent to you and this alert will be removed from your Alerts list.

← Create alert 

Bid Offer

CONTRACT	BID	OFFER	STATUS
Jun 20	7000.00	7250.00	● Live

Alert me when bid reaches

▼ 7100.00 ▲

You'll receive an sms notification

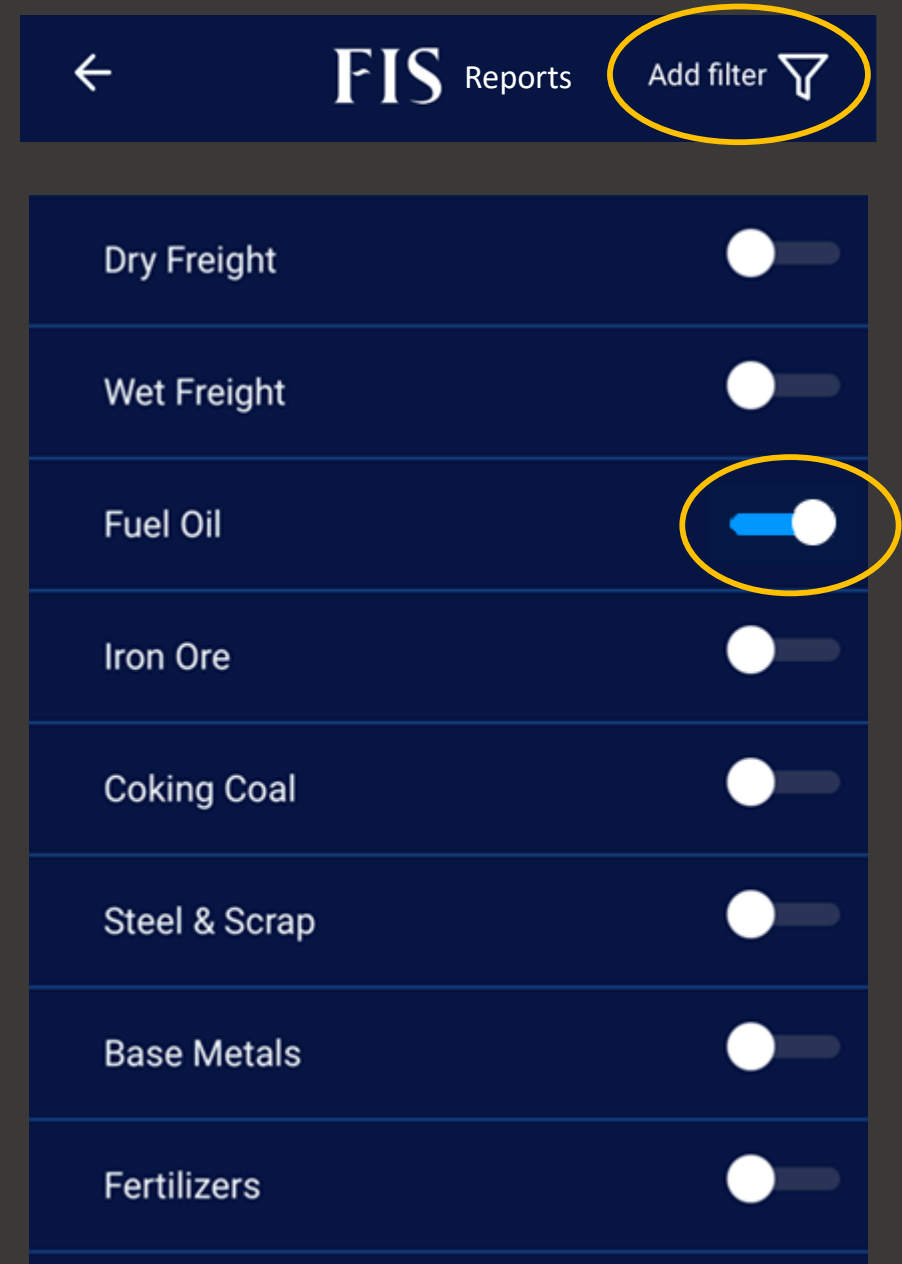
SAVE ALERT

Reports Filter

You can filter your news items by product from the 'Add filter' tab located at the top right corner of the 'Reports' tab section.

When selected a list of the application content is displayed, allowing you to enable or disable the filter for this content.

By default, All content is selected, to limit your reports to Fuel Oil only, simply click on the toggle slider, which applies the filter for this Product.



Using FIS Live on your Desktop

The app can be used on a mobile device but is also optimised for use on your desktop/laptop via the web. Just log in as normal at www.fis-live.com

The logo for FIS LIVE is displayed on a dark blue square background. The letters 'FIS' are in a large, white, serif font. Below 'FIS' is a thin white horizontal line. Underneath the line, the word 'LIVE' is written in a smaller, white, sans-serif font.

In chart views, click on the chart with the mouse to bring up the legend, and click again to scroll between technicals.

We hope you enjoy our new service, and please don't hesitate to contact us with any further questions.

For a full list of broker contacts, visit:

<https://freightinvestorservices.com/contact-us-fis/>